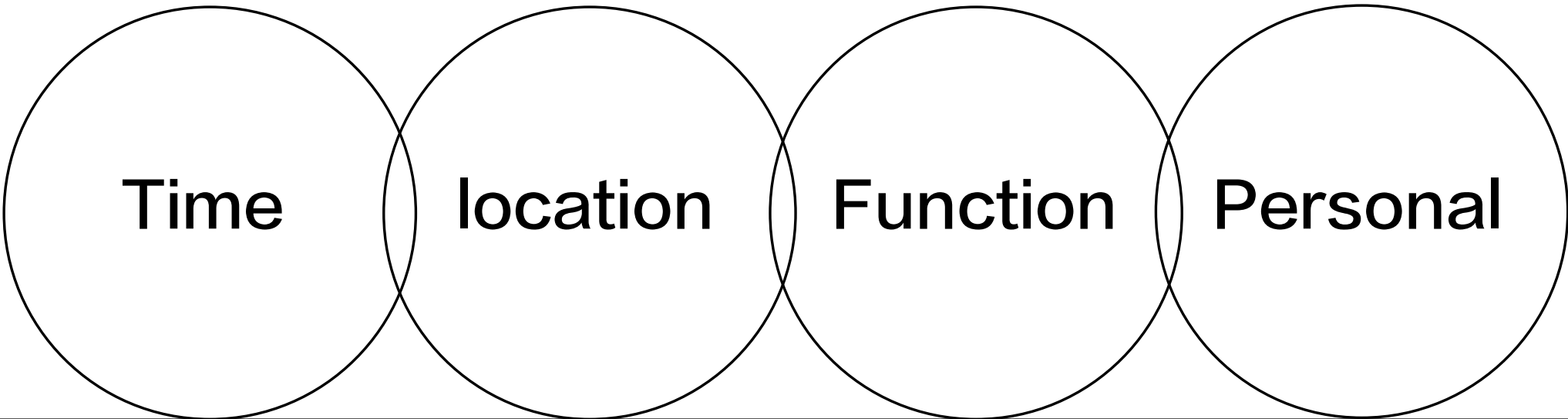


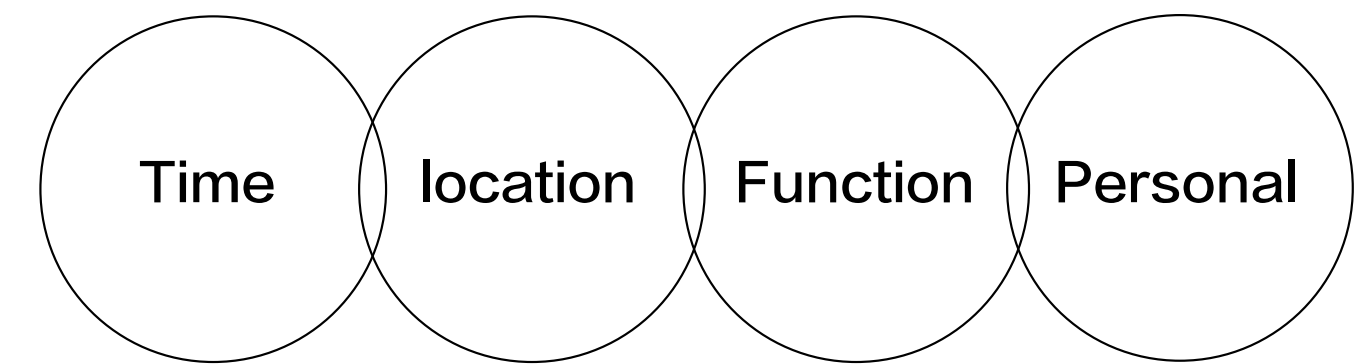
# Unit1-2 Methods of cataloguing.

What are the different components?  
How are they similar?  
How are they different?....etc.  
"experiment extensively with 3–4 new methods of cataloguing that reconfigure the purpose, value, and meaning of the individual components and the set."  
"Consider how these methods allow you to create new patterns and change the relationships between the items in the set, and experiment with a range of formal approaches to change how the set is presented, circulated, or accessed."

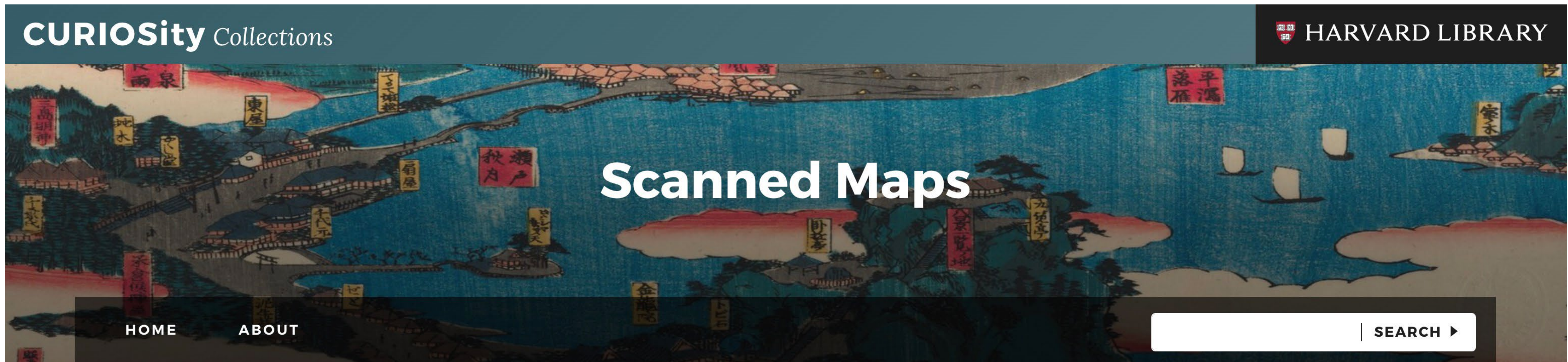




# MAPS



I found a collection of maps from the Harvard online library and plan to use them as material for classification. I've been reflecting on the key features of maps, from the physical to the human aspects, and have summarized four essential traits of maps: time, location, function, and personal. I will combine these four characteristics into groups and then categorize them accordingly.





# Q "Different times, same location"

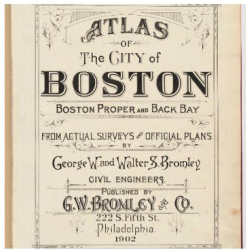
-Atlas of the city of Boston ; Boston proper and Back Bay, from actual surveys and official plans.

Time

location

The same place is that they are maps of the same place, the difference is that the drawing of the map has changed according to the change of time.

Imagine making a map, same place, different time, to show people how geography and history have changed over time.



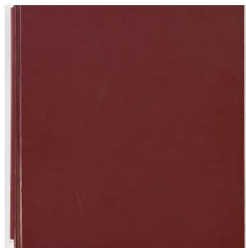
67. Atlas of the city of Boston ; Boston proper and Back Bay, from actual surveys and official plans

|                       |  |
|-----------------------|--|
| CREATOR / CONTRIBUTOR | Bromley, George Washington, creator<br>Bromley, Walter Scott |
| DATE                  | 1902   |
| PLACE OF ORIGIN       | Pennsylvania<br>Philadelphia                                 |
| PUBLISHER             | Bromley  |



68. Atlas of the city of Boston ; Boston proper and Back Bay, from actual surveys and official plans

|                       |                                      |
|-----------------------|--------------------------------------|
| CREATOR / CONTRIBUTOR | Bromley, George Washington., creator |
| DATE                  | 1912                                 |
| PLACE OF ORIGIN       | Pennsylvania<br>Philadelphia         |
| PUBLISHER             | G.W. Bromley and Co.                 |



69. Atlas of the city of Boston, city proper and Roxbury ; from actual surveys and official plans

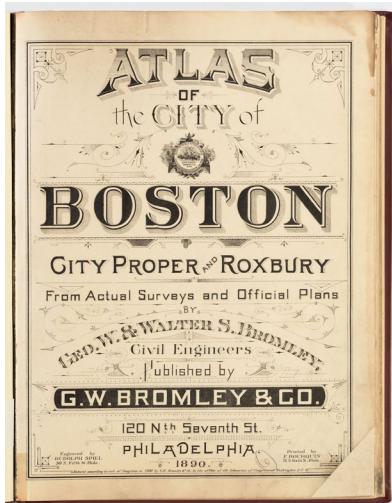
|                       |                                      |
|-----------------------|--------------------------------------|
| CREATOR / CONTRIBUTOR | Bromley, George Washington., creator |
| DATE                  | 1890                                 |
| PLACE OF ORIGIN       | Pennsylvania<br>Philadelphia         |
| PUBLISHER             | Bromley                              |



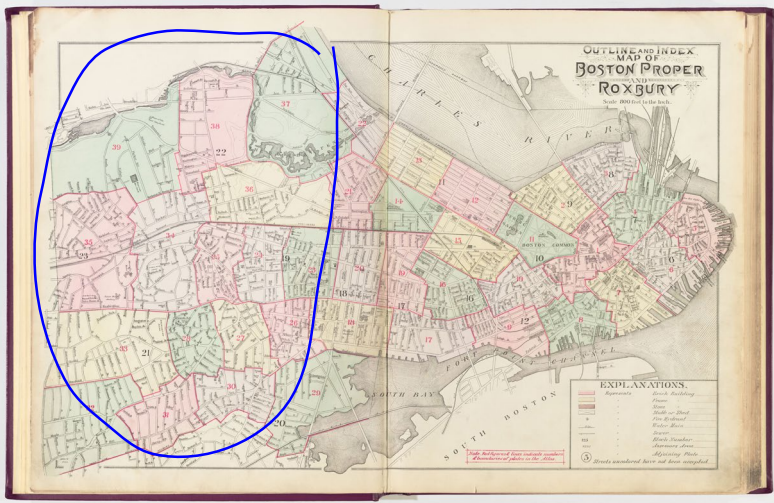
70. Atlas of the city of Boston ; Roxbury. From actual surveys and official plans

|                       |                                     |
|-----------------------|-------------------------------------|
| CREATOR / CONTRIBUTOR | Bromley, George Washington, creator |
|-----------------------|-------------------------------------|

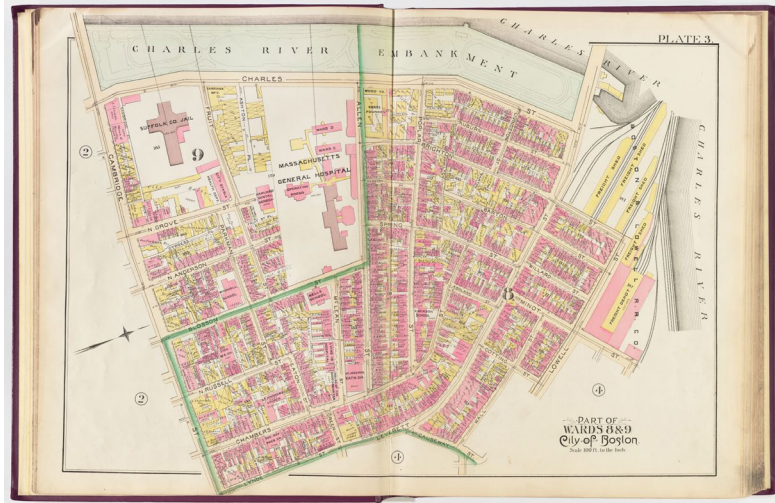
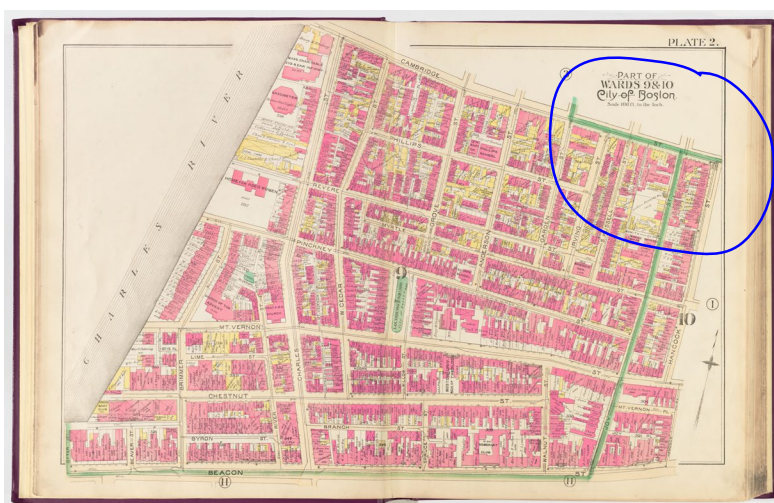
1890



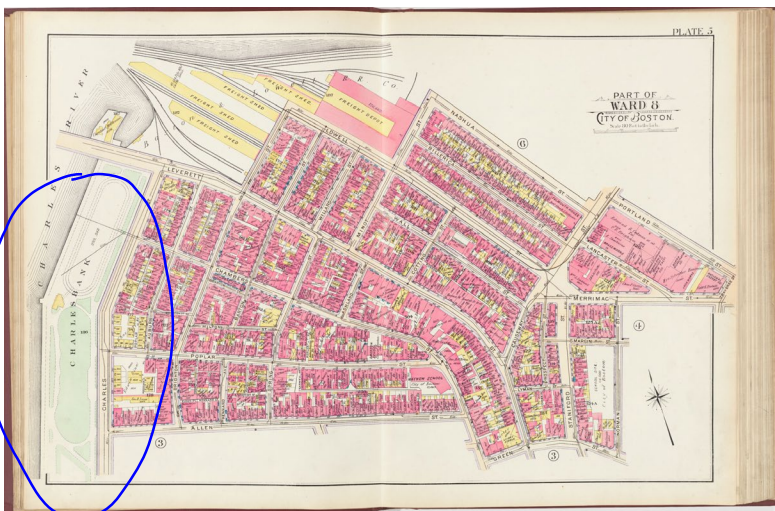
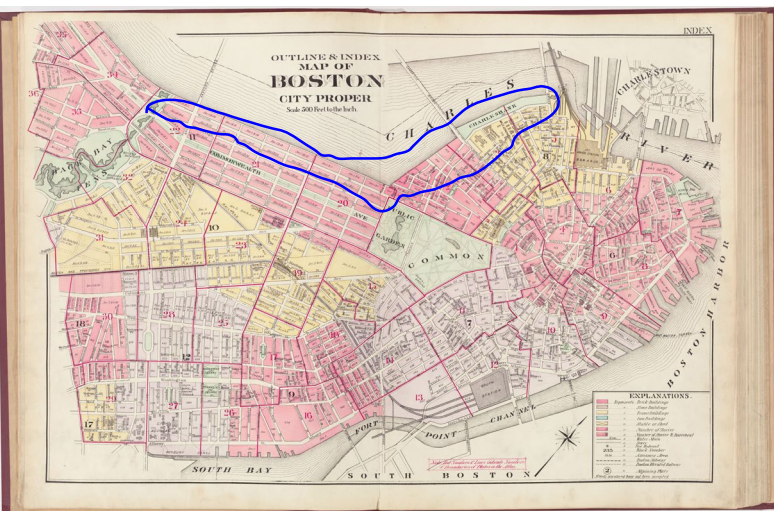
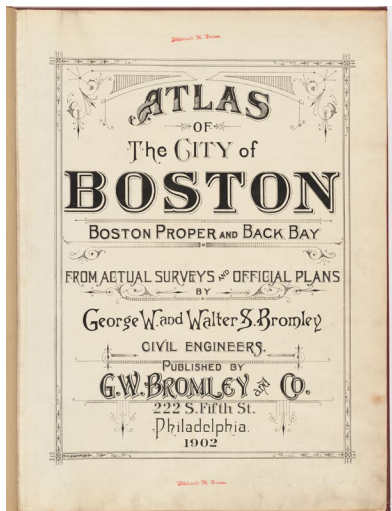
Change of book cover



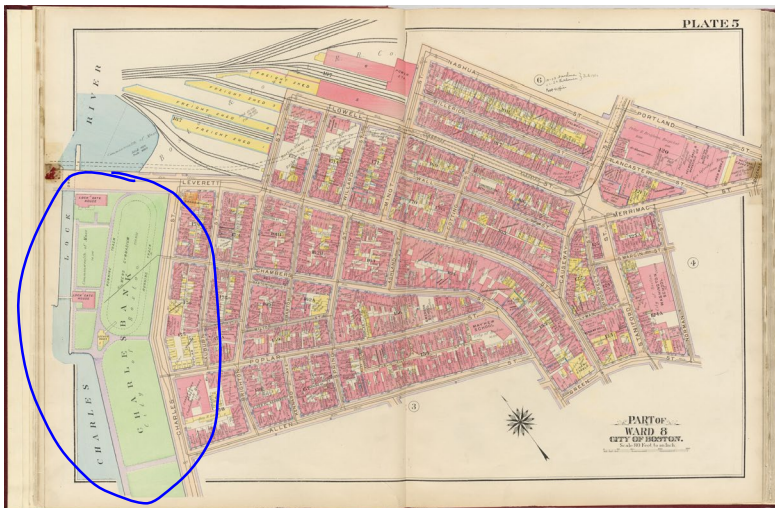
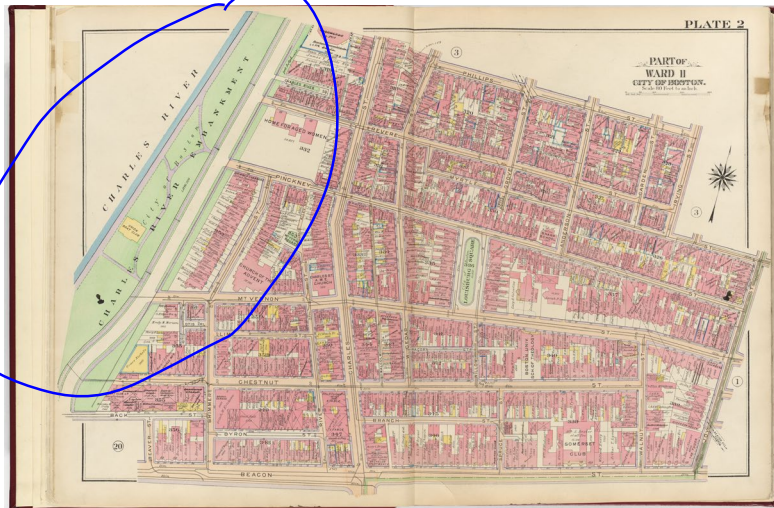
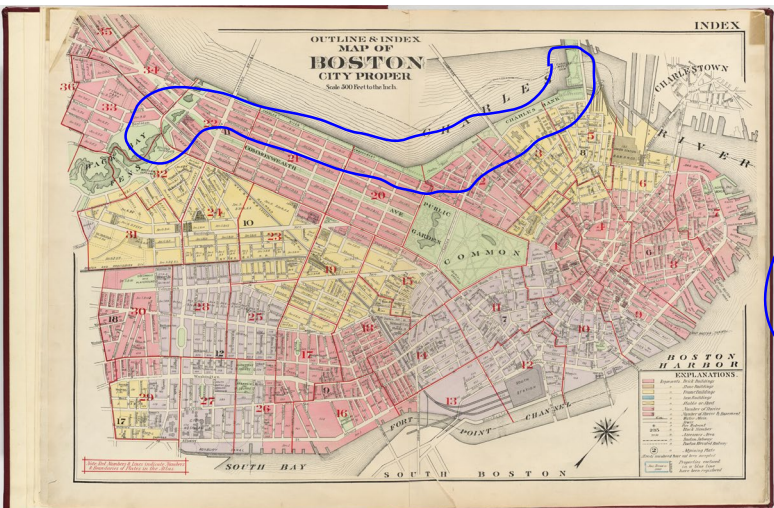
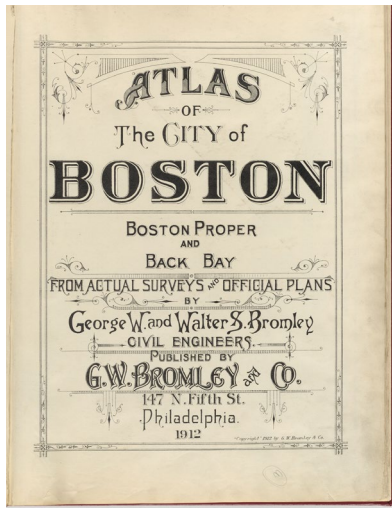
Change of mapping



1902



1912





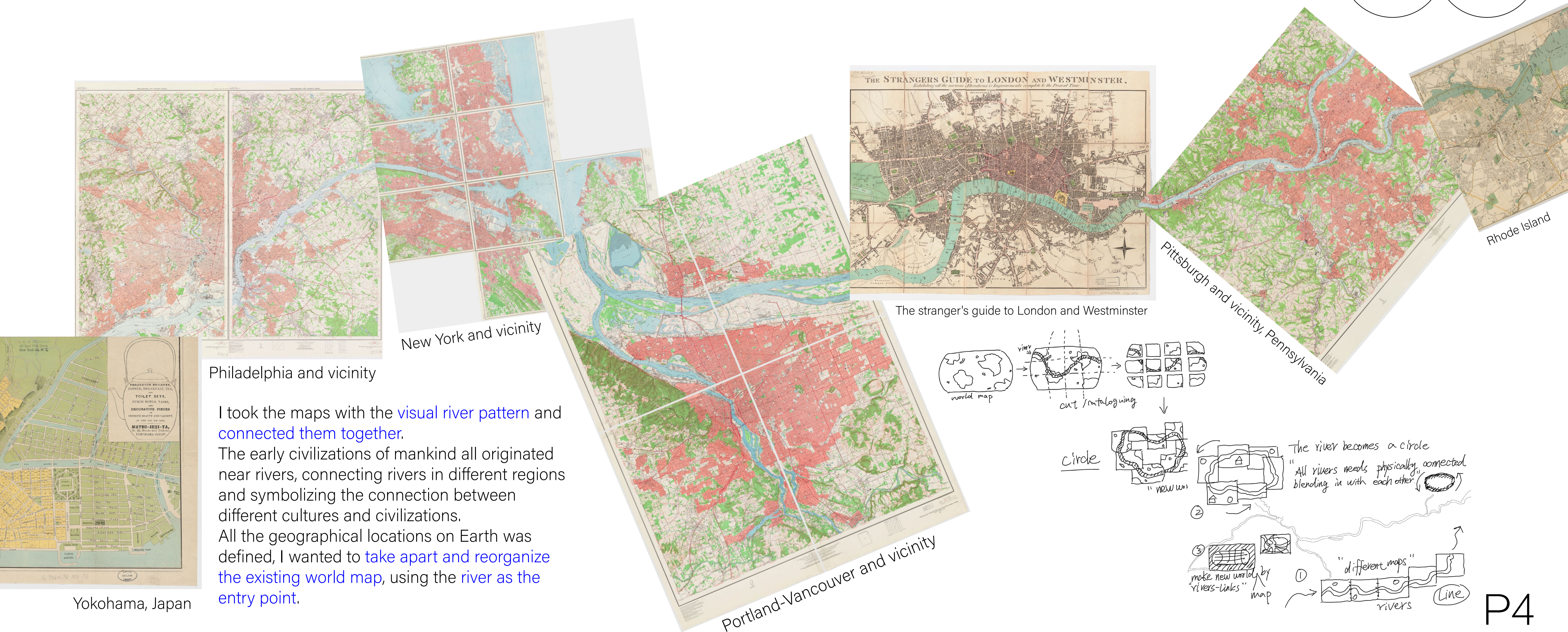
02

# "Linking rivers together"

–Rivers are the birthplace of human civilization, and all the maps related to rivers are linked together..

Function

location



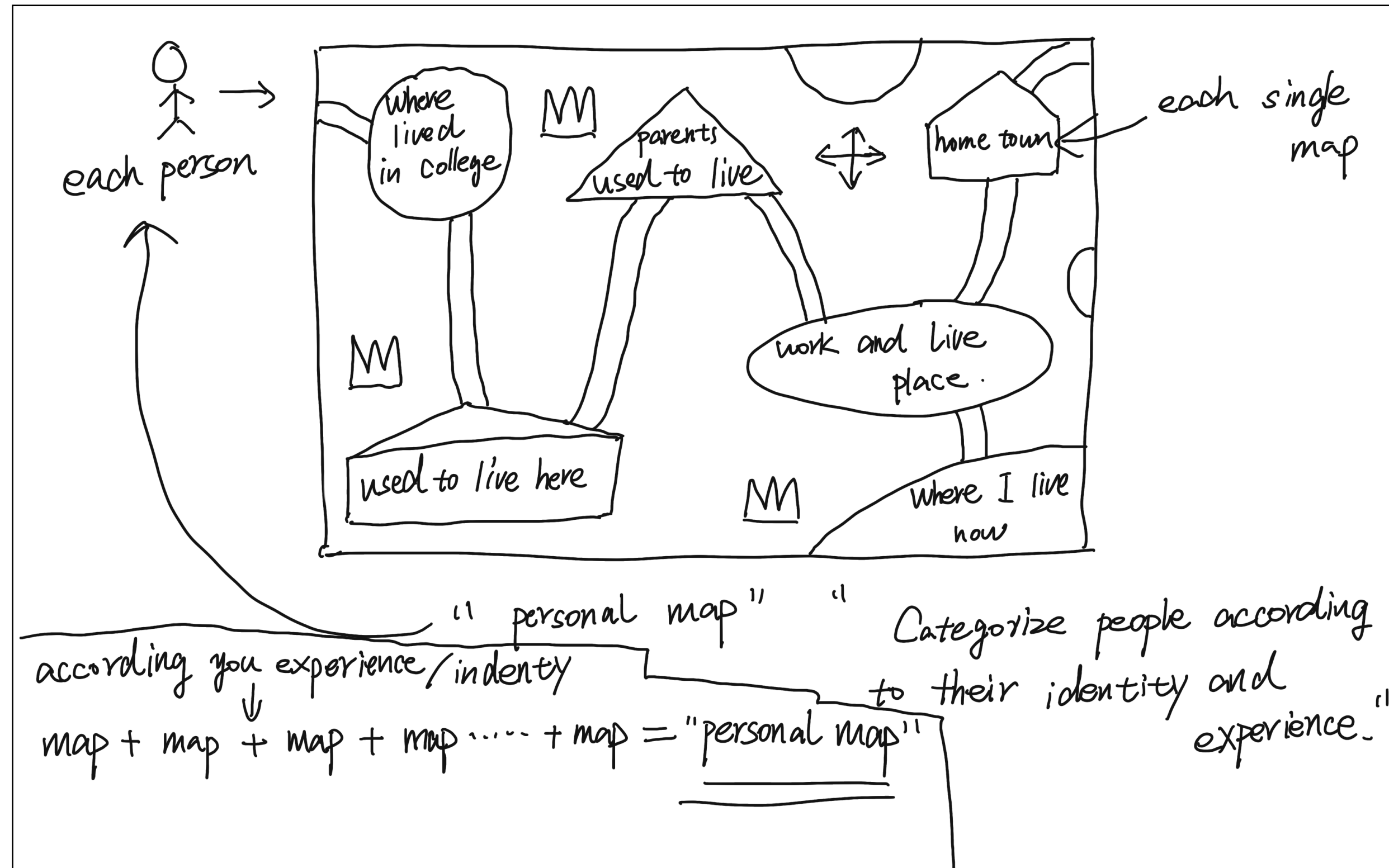
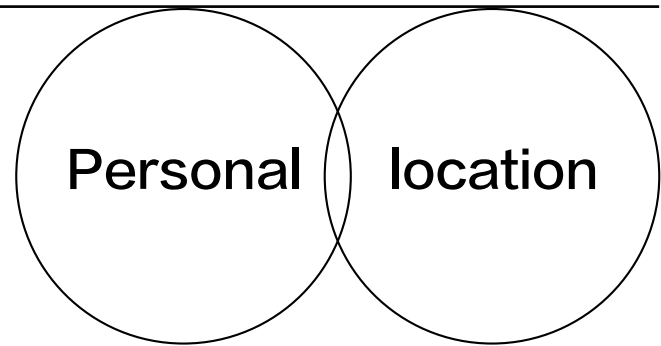


# 03 "Sort by the city you've lived in"

Most people are **not defined by a single place**.

Where you were born, where your family came from, where you lived in the past, and where you live now, these locations can make a big difference.

Still, when people ask where you're from, we're often asked to give a simple answer about location identity, misrepresenting and denying those with more complex identities.



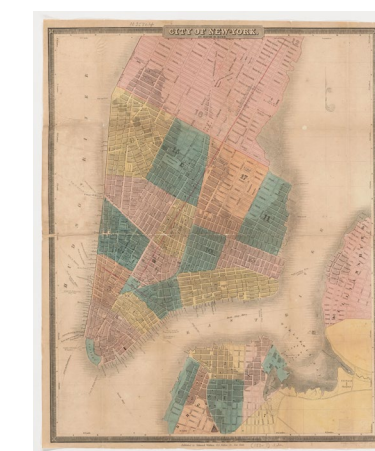
ex : My personal map



Japan, Tokyo



Beijing, China



NYC, US



London, UK

||  
"New Map"